

# OfficeMart

#Sololosmejoresmuebles



# Abound<sup>®</sup>

Workstations

# Optimized for change.

## Stacked in your favor.

Able to support a multitude of office layouts in a single bound? Check. Makes installation and reconfiguration seem like child's play? Check. When it comes to delivering durable and flexible workspaces, Abound performs like no other. An interchangeable frame and tile system featuring an impressive selection of tiles, Abound supports any office space design to help workplaces reach their full potential.



Shown with Solve®seating, Flock®seating, and Contain®storage.



## Work the room.

No one-trick ponies here. Abound helps organizations look buttoned-up by creating a unified aesthetic for a host of spaces. From open environments to teaming spaces and private offices, Abound offers a crisp, modern take on an architectural aesthetic.







Shown with Ignition®2.0 seating, Coordinate™ height-adjustable tables and Voi@credenzas.



Shown with Ignition@2.0 & Flock@seating and Contain@towers & credenzas.





## It's a cinch.

Hassle-free. There's no other way to describe just how simple it is to install and reconfigure Abound. We've even made power and tech a breeze to lay-in and switch up as needed. Designed with durability and flexibility in mind, Abound is perfect for organizations that undergo frequent change and need it done in a snap.



### TILES

Ready for a new look? You can easily switch out tiles to achieve different aesthetic or functional goals. Tiles can be placed in interchangeable positions up and down a panel frame.

### FEWER PARTS, MORE OPTIONS

Abound not only works everywhere, it's easy to install anywhere. With a minimal kit of parts and intuitive universal connectors, Abound can be specified, ordered, installed and reconfigured quickly.

### POWER UP

Position power and data outlets at the desktop, panel base, or both. Lay-in capabilities—electrical and data in the baserail or data in the top channel—expand cabling capacity and make reconfigurations easy.





## Make it yours.

Looks AND personality. Throw in hard-working, and you've got yourself a winning combination. When it comes to design flexibility, interchangeable Abound tile options support every kind of aesthetic and work style to reflect the distinctive character of your organization.



**FABRIC**  
Tackable and acoustical, powered or not.



**FROSTED GLASS**  
Welcome light into the work area while offering increased privacy.



**CLEAR GLASS**  
Increase access to natural light and views.



**SLOTTED TOOL**  
Metal accessories can be painted to coordinate with panels.



**MARKERBOARD**  
This magnetic tile is a great communication tool.



**HARD-SURFACE**  
Easily wipe clean in high-traffic areas, or add the warmth of woodgrain.



**FRAMELESS GLASS TILE**  
Provide access to natural light and create clear sightlines.



**GALLERY PANEL**  
Offers a sleek and modern approach to space division.



Shown with Ignition®2.0 and Mav™ seating

## Preferential Treatment

Whether you prefer quiet design or favor making a bold statement, Abound components offer boundless design opportunities that span from refined to relaxed. With a mix of open, traditional and gallery panels, and a myriad of tile, worksurface, and storage options, any organization can achieve their perfect vibe.



Traditional Panel Frames

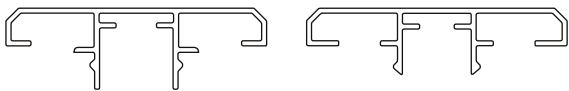


Open Base Panel Frames

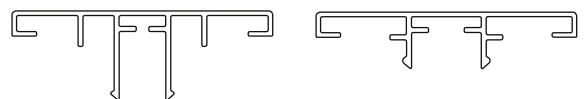


Gallery Panel

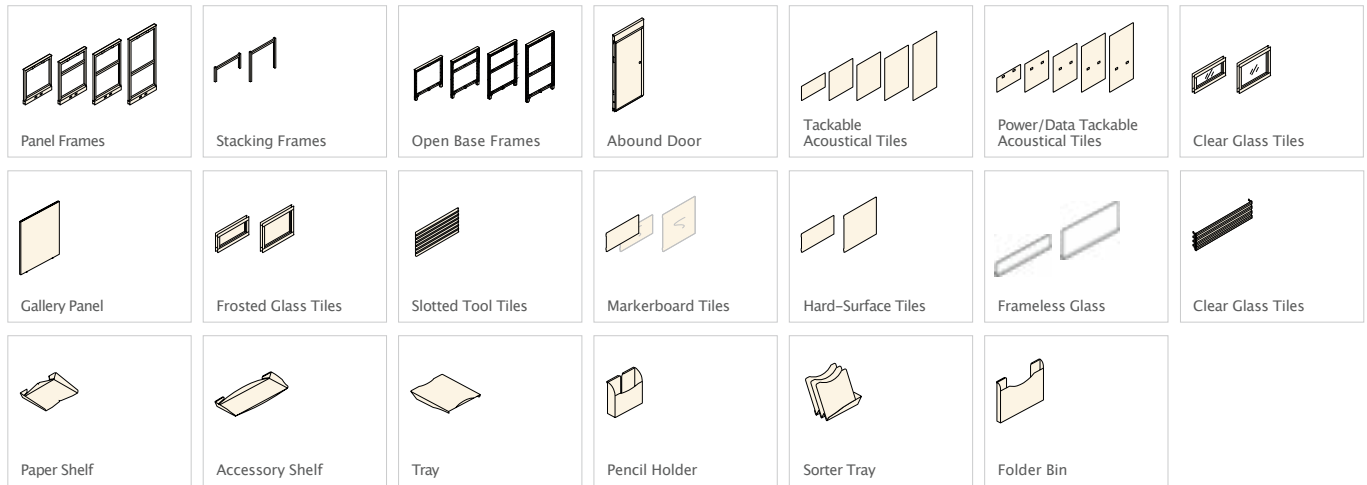
Chamfered Trim



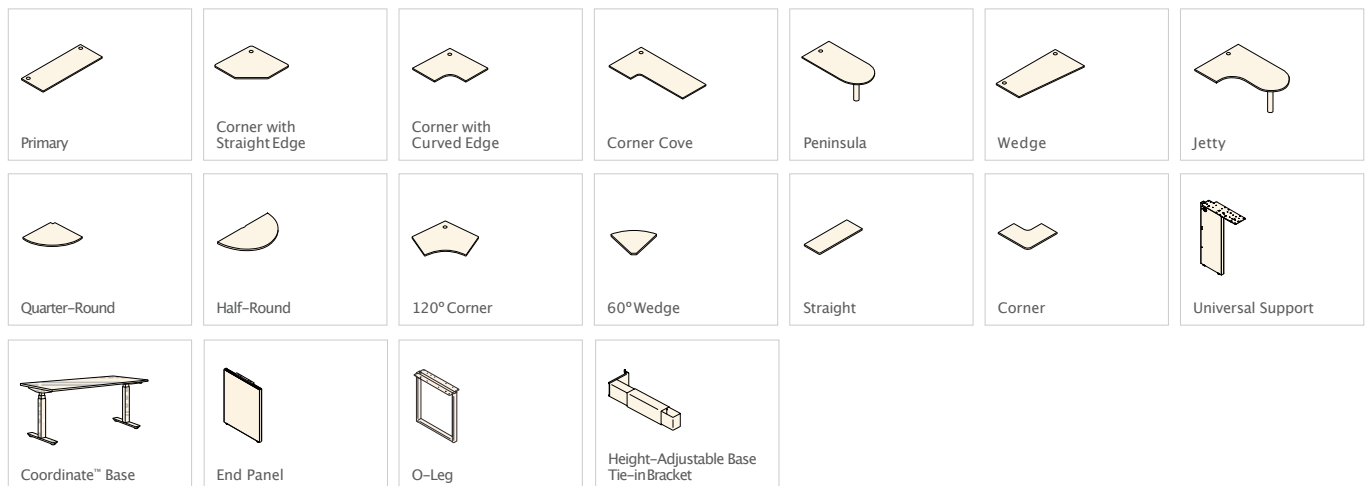
Flat Trim



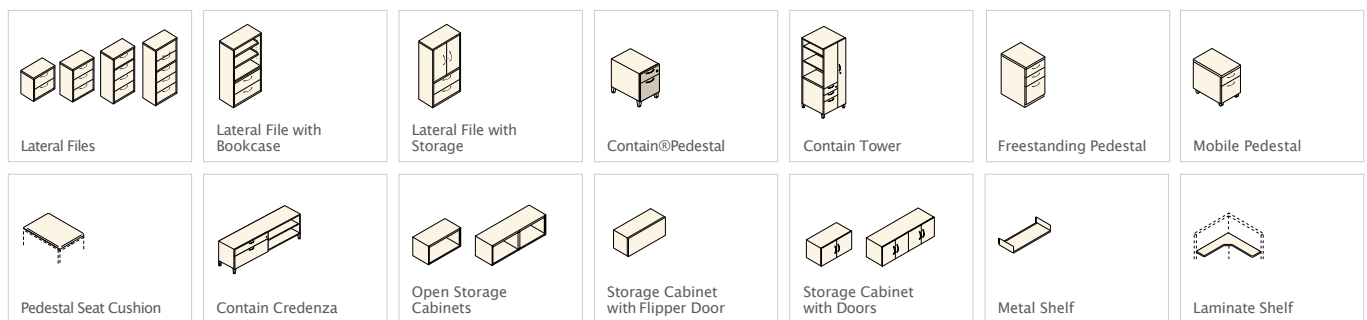
## Frames, Tiles, and Accessories



## Worksurfaces and Supports



## Storage







## CONTÁCTANOS



**OfficeMart**  
#Sololosmejoresmuebles



MXL. (686) 558 7874  
TJN. (664) 689 2823  
ENS. (646) 144 6382



[ventas@oficemart.mx](mailto:ventas@oficemart.mx)



[oficemart.mx](http://oficemart.mx)



[OficeMart](https://www.facebook.com/OficeMart)